

Model 58 Algarve Color

Bolero

Size Small

Materials – Algarve Color from Austermann

100% Mercerized Cotton, each ball = approx 142 m / 50 g

300 g Color #104 blau (blue)

Knitting needles, one pair size 3 mm (US 3) from Schoeller + Stahl, cable needle (cn)

Take time to check gauge!

Pattern St 1: (Gauge: 27 sts and 33 rows = 10 x 10 cm/4 x 4")
St st (K on RS rows, P on WS rows) with size 3 mm (US 3) needles

Pattern St 2: (Gauge: 23 sts and 44 rows = 10 x 10 cm/4 x 4")
Garter st (K every row) with size 3 mm (US 3) needles

Cable pat (= 26 sts):

Rows 1 – 4: Knit.

Row 7: 1 selvage st, slip 6 sts to cn and hold to front of work, K6, then K6 from cn, slip 6 sts to cn and hold to back of work, K6, then K6 from cn, 1 selvage st.

Row 8: Purl.

Rows 9 - 12: Work in St st.

Rep rows 1 – 12.

Instructions:

Back:

Cast on 94 sts and work in Pattern st 2. For the side shaping, inc 1 st each side alternately every 4th and 6th row 7 times = 108 sts. Work even until piece measures 9 cm/3 ½" from beg.

For the Armhole Shaping, bind off 2 sts at beg of next 4 rows, and dec 1 st each side every 2nd row 3 times, every 4th row 5 times = 84 sts. Work even until piece measures 25 cm/10" from beg.

For the Neck Shaping, bind off center 36 sts, and working both sides at once, bind off from each neck edge 3 sts once, 2 sts 4 times, dec 1 st every 2nd row once and every 4th row once. When piece measures 29 cm/11 ½" from beg, bind off rem 11 sts each side for shoulders.

Left Front:

Cast on 23 sts and work in Pattern st 2. For the front curve, cast on at LH side 3 sts once, then 2 sts 2 times, inc 1 st every 2nd row 2 times and every 4th row once and every 6th row 2 times, at the same time, at RH side, work side shaping same as Back.

When piece measures 6 cm/2 ½" from beg, for the Neck Shaping, dec 1 st at LH side alternately every 4th and 6th row 19 times, at the same time, when piece measures 9 cm/3 ½" from beg, shape the Armhole at RH side same as Back.

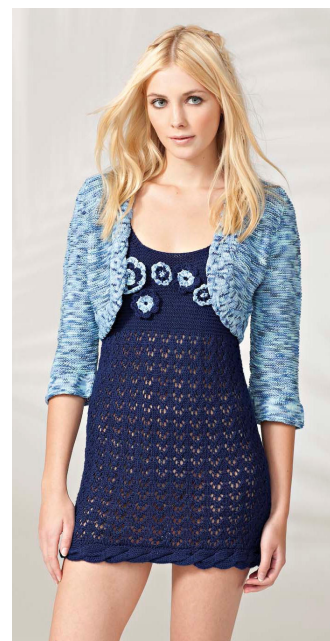
When piece measures 29 cm/11 ½" from beg, bind off rem 11 sts for shoulder.

Work **Right Front** to correspond to Left Front, reversing all shaping.

Sleeves:

Cast on 88 sts and work 3 rows in garter st. Cont in Pattern st 1 until piece measures 5 cm/2" from beg, dec 31 sts evenly spaced across last WS row = 57 sts.

Cont in Pattern st 2. For the sleeve shaping, inc 1 st each side on the 11th row above Pattern st 2,



All samples, drawings and photographs are copyrighted. No part of this pattern may be copied or reproduced by any means without written permission of Schoeller Süssen GmbH.

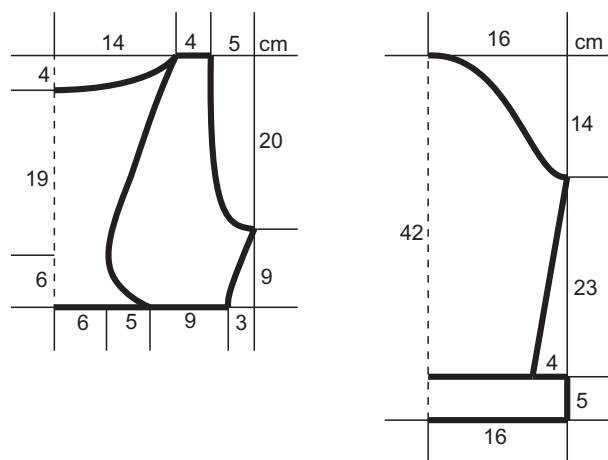
then rep inc every 10th row 8 times = 75 sts. Work even until piece measures 28 cm/11" from beg. For the Cap Shaping, bind off 2 sts at beg of next 4 rows, dec 1 st each side every 2nd row 7 times, every 4th row 8 times, and every 2nd row 5 times, bind off 2 sts at beg of next 4 rows. When piece measures 42 cm/16 1/2" from beg, bind off rem 19 sts.

Cable band:

Cast on 26 sts and work in Cable pat for approx 155 cm/61" from beg. Place sts on a holder.

Finishing:

Block pieces to measurements. Sew shoulder and side seams. Set in sleeves. Sew cable band around outside edge of Bolero. Sew cast-on and bound-off edges of band tog.



All samples, drawings and photographs are copyrighted. No part of this pattern may be copied or reproduced by any means without written permission of Schoeller Süssen GmbH.

Schoeller Süssen GmbH · Postfach 1160 · D-73073 Süssen ·
Telephone +49/7162-93050-15 · Fax +49/7162-430-80 · www.austermann-wolle.de